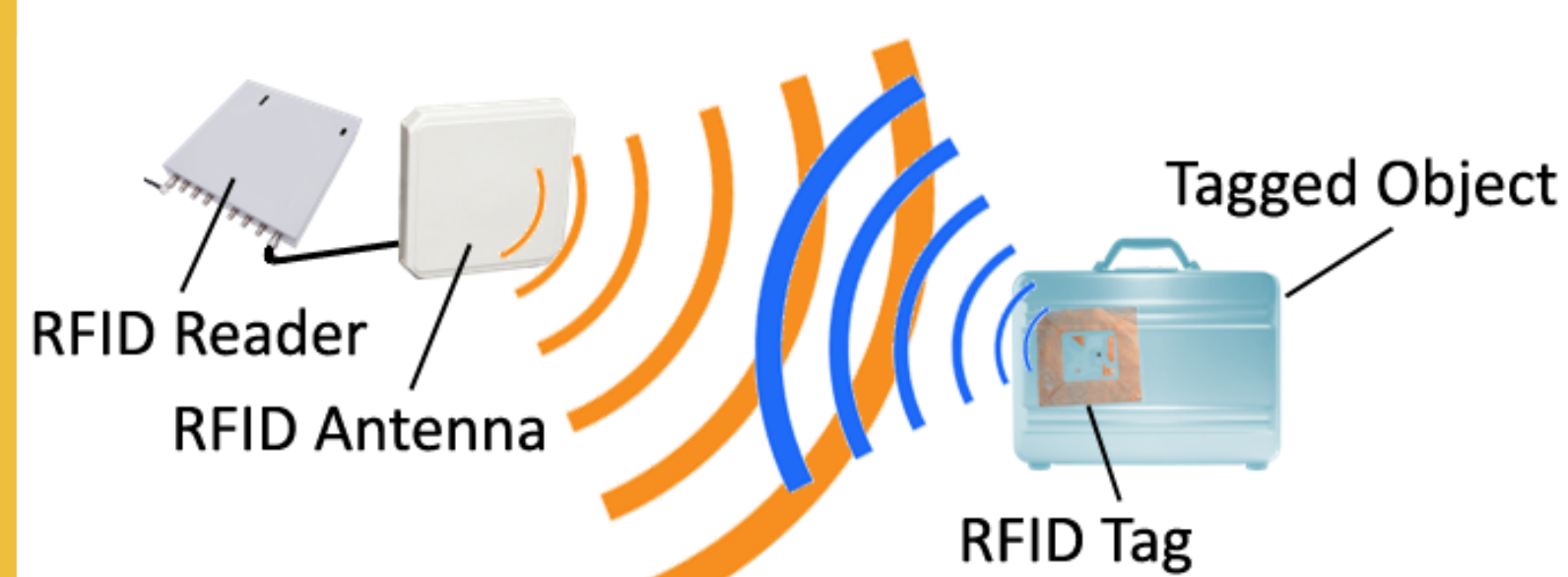


# Longitudinal Study of a Building-Scale RFID Ecosystem

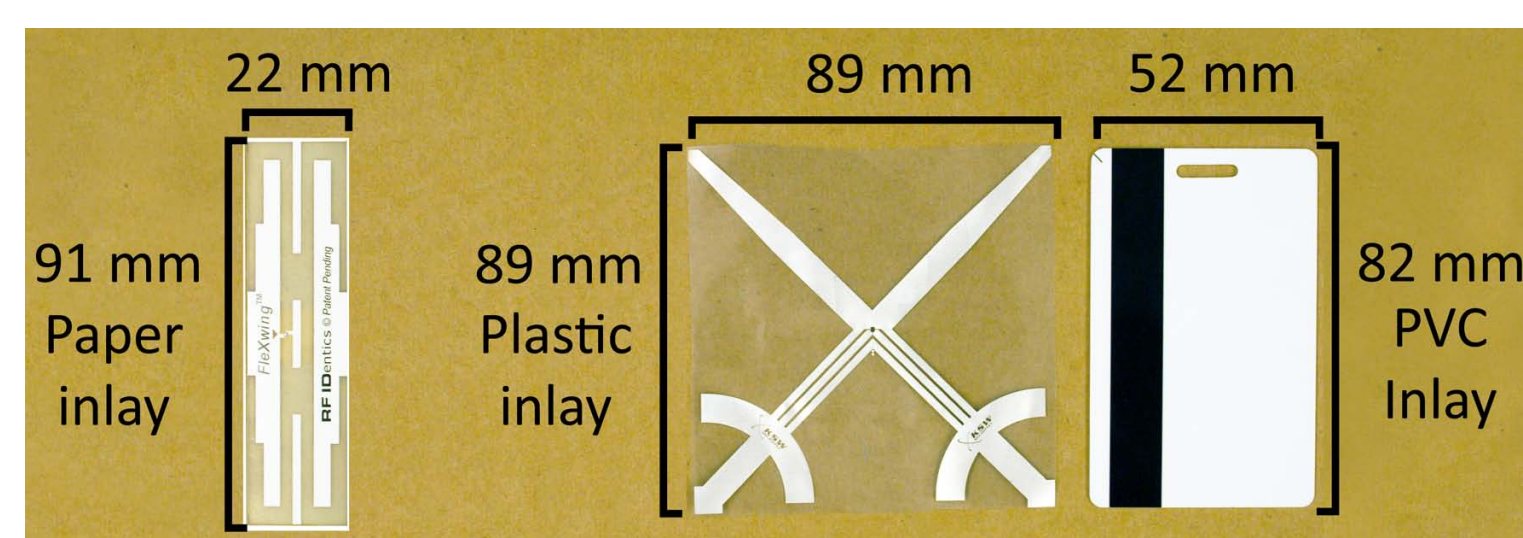
Affiliates 2009

## Study Parameters

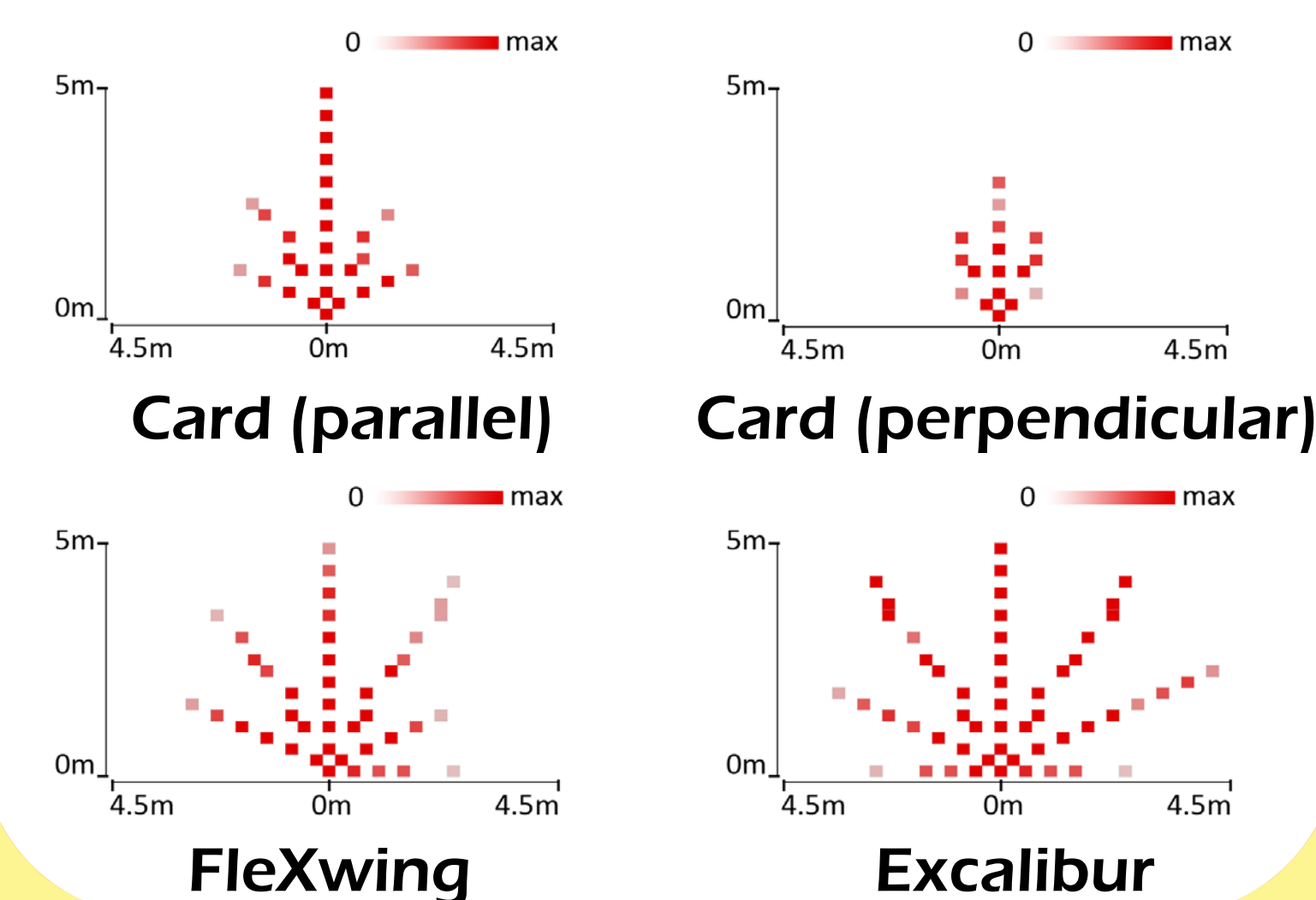
- Passive EPC Gen 2 Tags
- 47 readers, 160 antennas
- 324 tags on people, objects
- Search & social applications
- 67 Participants
- 4 weeks



## Tag Benchmarks

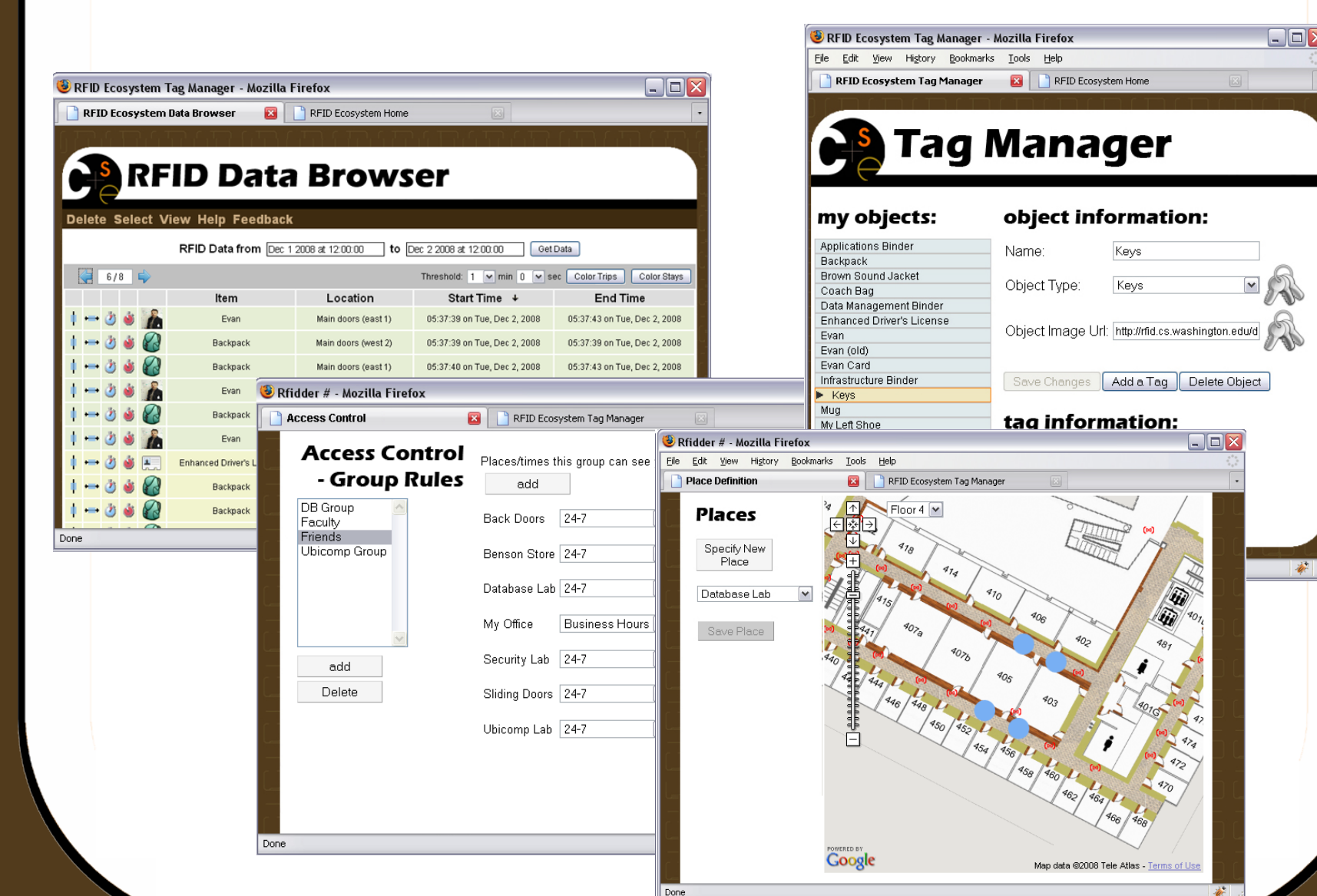


- FlexWing, Excalibur, Card
- Baseline lab benchmarks:



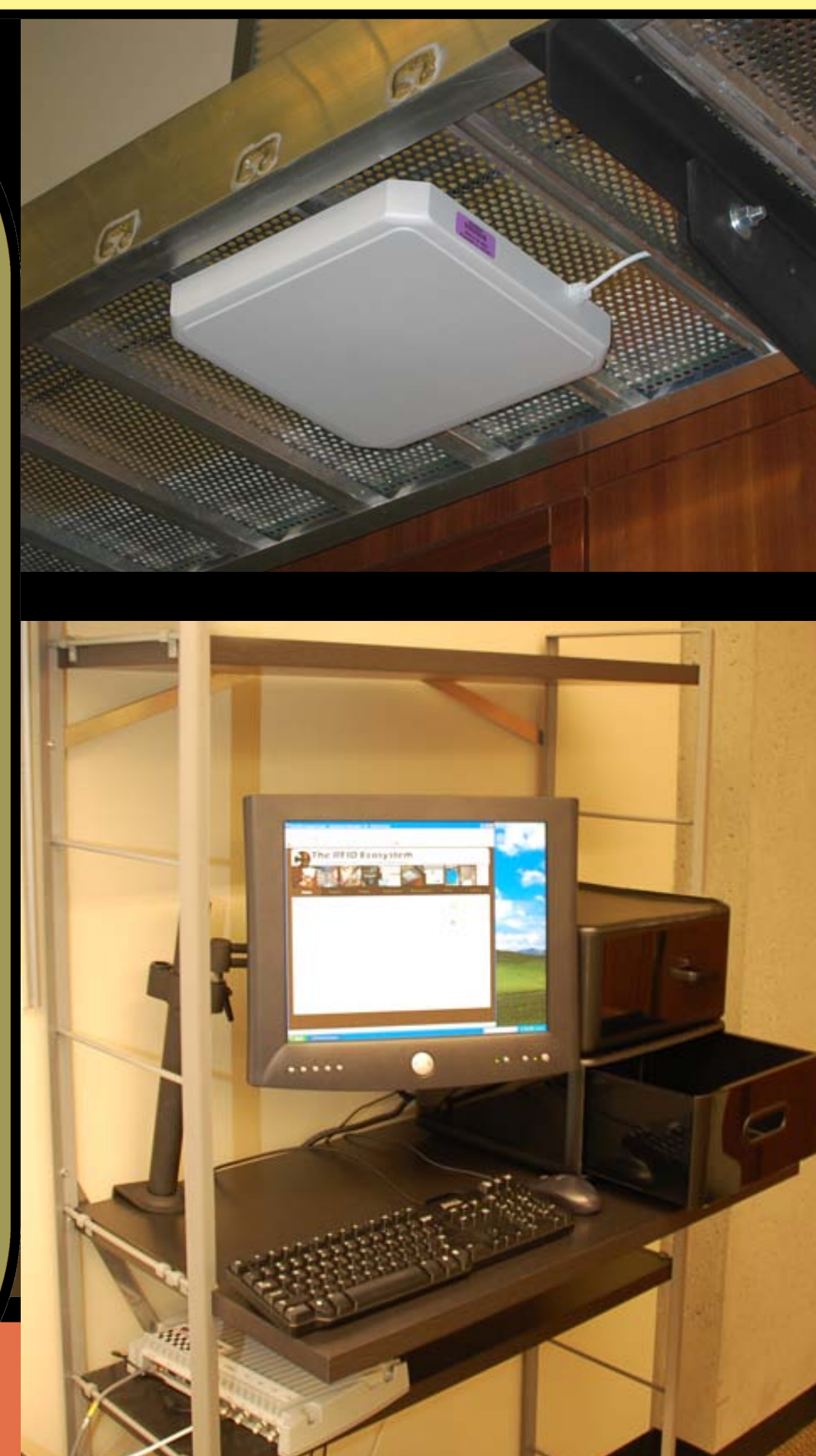
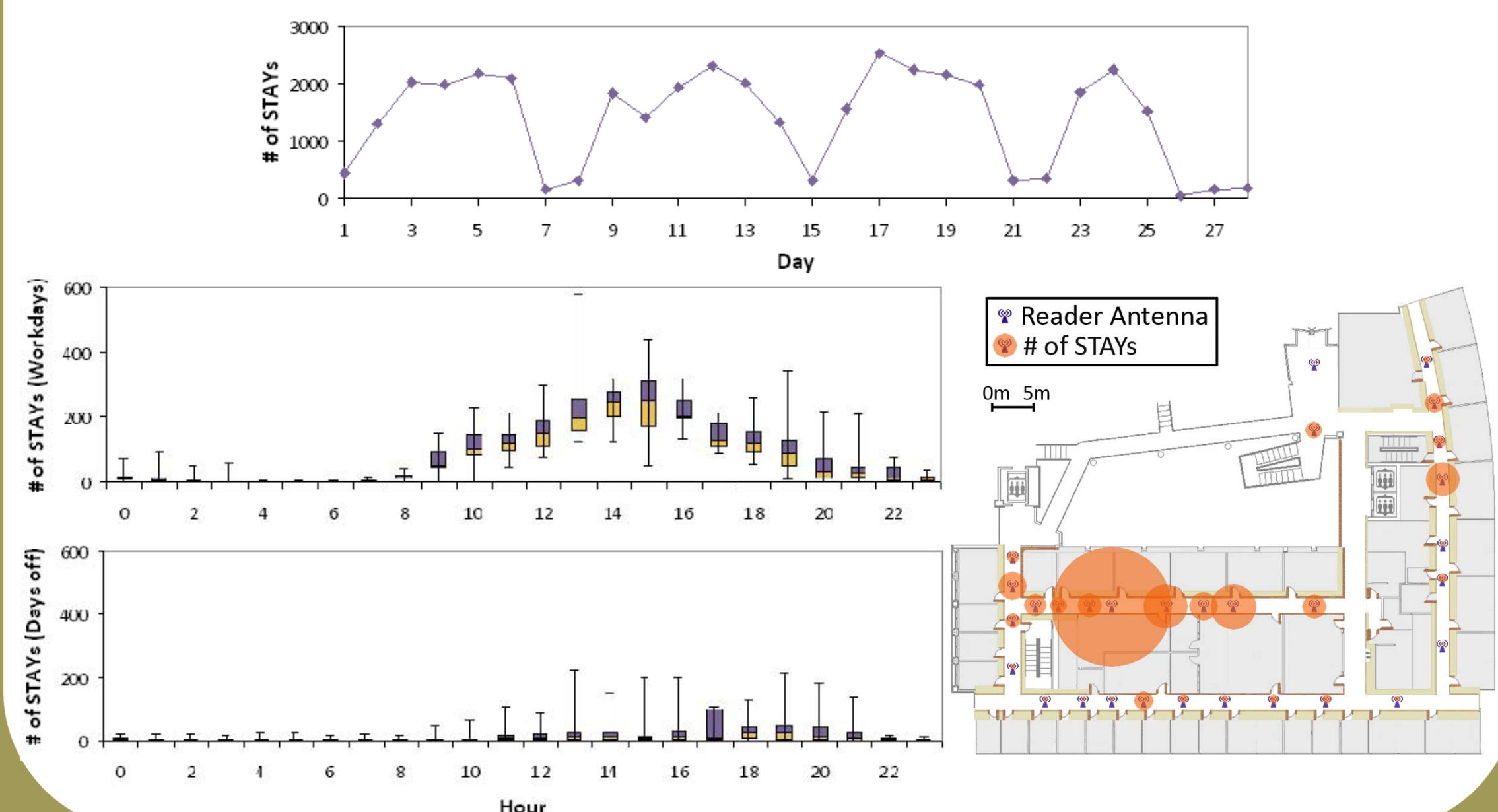
## User Tools

- Tag management tool
- Place definition tool
- Privacy management tools



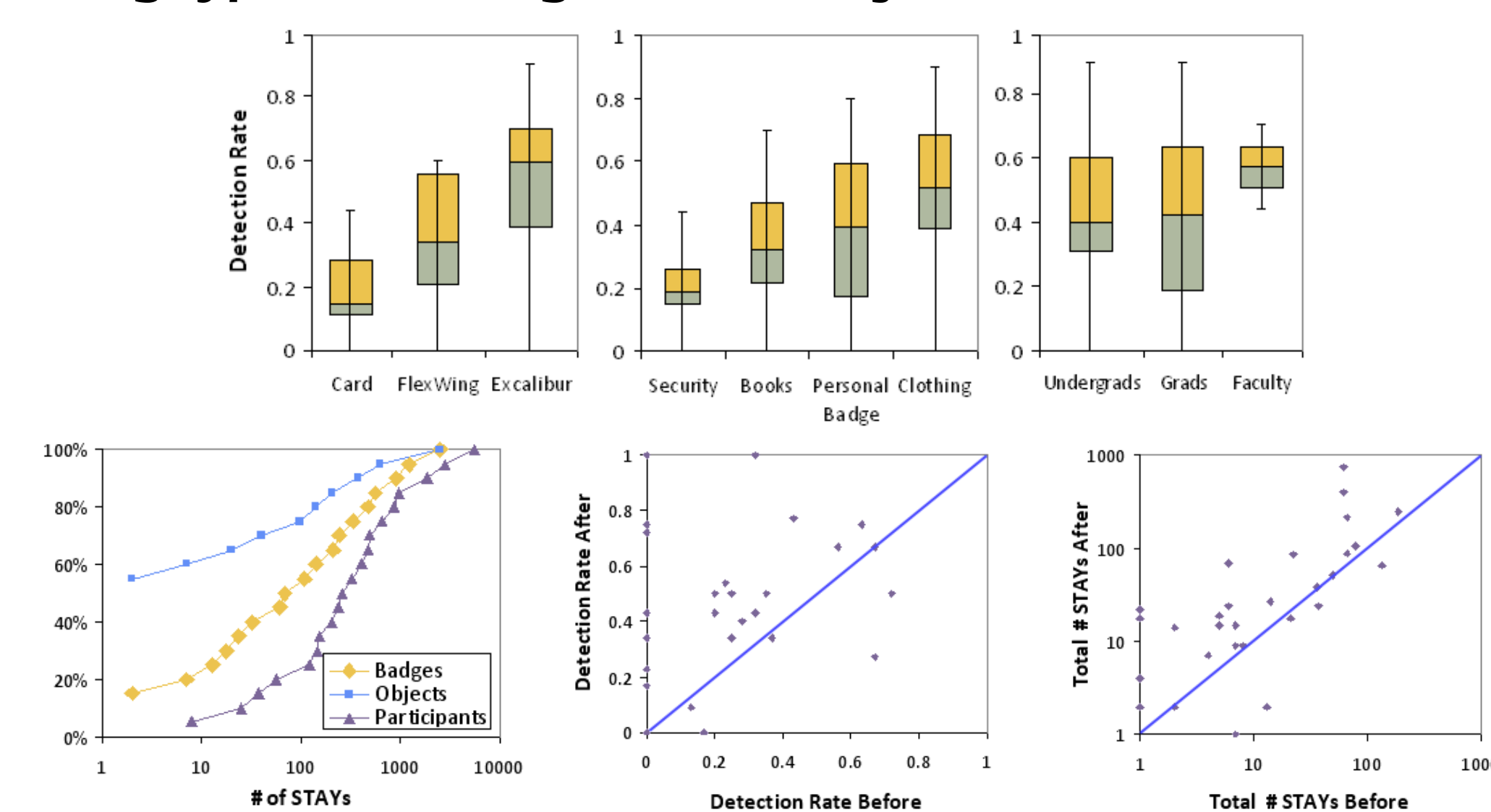
## Data Collection

- 1.5 reads total, 2200/hr avg, 8400/hr max



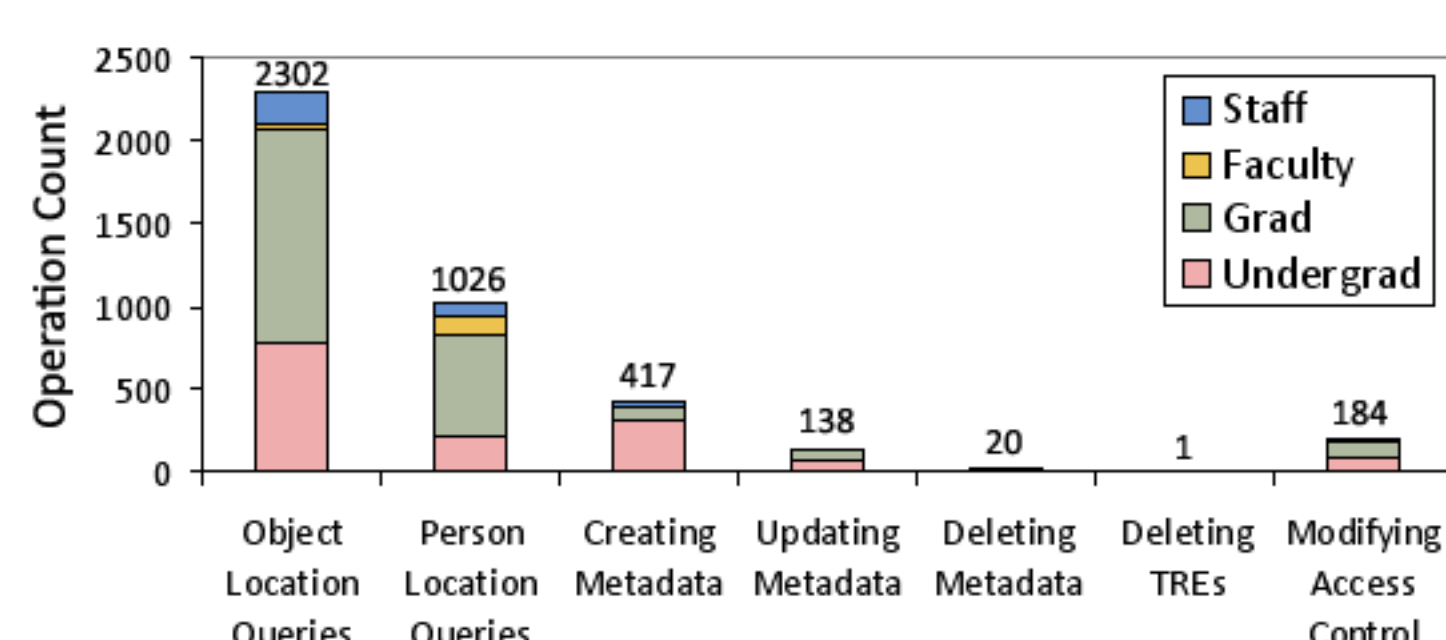
## People and Objects

- Readability correlated with:
- Tag type, mounting method, object material, user incentive



## Applications

- Web-based & mobile apps
- Personal object search
- Friend-finder, Facebook apps
- Usage correlates with tag performance
- Spike in usage first week, then decline



<http://rfid.cs.washington.edu>

Evan Welbourne, Emad Soroush, Magdalena Balazinska, Gaetano Borriello